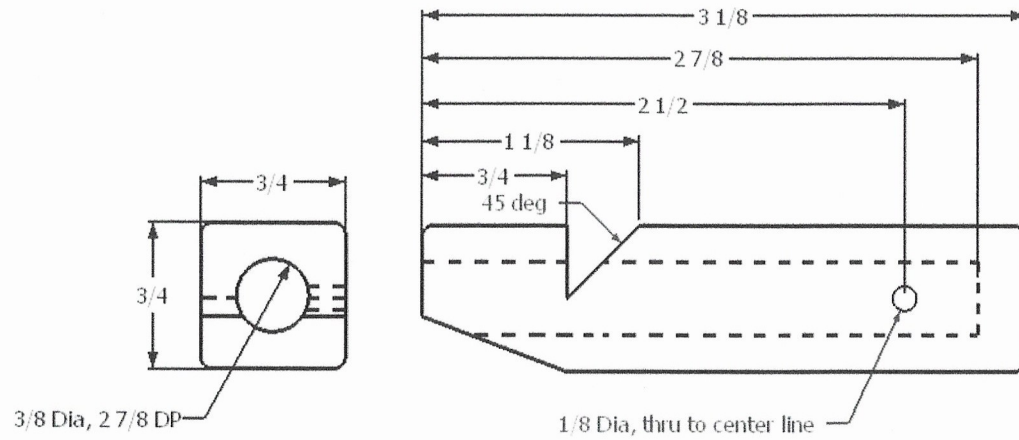


# 2 NOTE WOODEN WHISTLE

March 2019



1. Cut  $3/4 \times 3/4$  to length
2. Drill  $3/8$  dia hole  $2 7/8$  Dp.
3. Drill  $1/8$  dia side hole to center
3. Cut 45 deg. notch  $3/8$  Dp.
4. Deburr
5. Place insert into  $3/8$  dia hole
6. Test for sound, adjust as needed
7. Glue insert in place

After glue dries, cut end of insert off flush then cut mouthpiece relief for contour.

FINISH as desired

